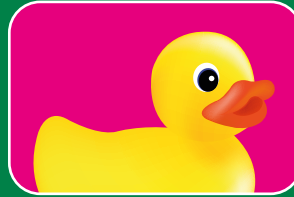
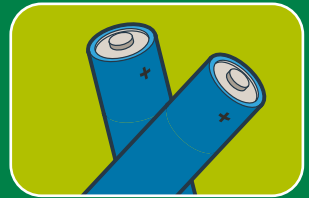
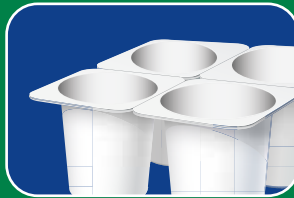
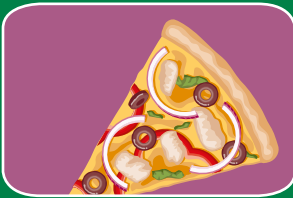


RUNNYMEDE

BIN COLLECTIONS AND RECYCLING GUIDE 2026

Includes 2026/27 bin collection calendar



YOUR BIN COLLECTION CALENDAR 2026

Check your collection day – runnymede.gov.uk/collections

January

M	T	W	T	F
Christmas				
revised				
collections				
19	20	21	22	23
26	27	28	29	30

April

M	T	W	T	F
		1	2	3
6	7	8	9	10
13	14	15	16	17
20	21	22	23	24
27	28	29	30	

July

M	T	W	T	F
		1	2	3
6	7	8	9	10
13	14	15	16	17
20	21	22	23	24
27	28	29	30	31

October

M	T	W	T	F
			1	2
5	6	7	8	9
12	13	14	15	16
19	20	21	22	23
26	27	28	29	30

February

M	T	W	T	F
2	3	4	5	6
9	10	11	12	13
16	17	18	19	20
23	24	25	26	27

May

M	T	W	T	F
				1
4	5	6	7	8
11	12	13	14	15
18	19	20	21	22
25	26	27	28	29

August

M	T	W	T	F
3	4	5	6	7
10	11	12	13	14
17	18	19	20	21
24	25	26	27	28
31				

November

M	T	W	T	F
2	3	4	5	6
9	10	11	12	13
16	17	18	19	20
23	24	25	26	27
30				

March

M	T	W	T	F
2	3	4	5	6
9	10	11	12	13
16	17	18	19	20
23	24	25	26	27
30	31			

June

M	T	W	T	F
1	2	3	4	5
8	9	10	11	12
15	16	17	18	19
22	23	24	25	26
29	30			

September

M	T	W	T	F
	1	2	3	4
7	8	9	10	11
14	15	16	17	18
21	22	23	24	25
28	29	30		

December

M	T	W	T	F
	1	2	3	4
7	8	9	10	11
14	15	16	17	18
See reverse for				
Christmas collections				

RECYCLING COLLECTION WEEK

- Recycling bin
- Outside food waste bin
- Textiles, small electricals and household batteries

RUBBISH COLLECTION WEEK

- Rubbish bin
- Outside food waste bin
- Textiles, small electricals and household batteries

RECYCLING BIN Collected fortnightly.



Paper



Clean card



Metal tins



Metal cans



Glass bottles



Glass jars



Clean foil



Plastic bottles



Cleaning product bottles



Pots and trays

Remember, all items that go in your recycling bin should be:

- **Clean** – rinse items before putting them in the bin
- **Dry** – do not put wet paper or card into the bin
- **Loose** – don't bag items, recycle items loose

Please only recycle items accepted by Runnymede Borough Council – check www.runnymede.gov.uk/recycling-waste

RUBBISH BIN Collected fortnightly.



Plastic bags



Crisp packets



Bubble wrap



Polystyrene



Coffee cups



Hard plastic toys



Tissues and wipes



Cartons



Black bin bags



Nappies

TEXTILES Collected weekly. Can also be recycled at community recycling centres.

YES PLEASE



Clothes



Underwear



Paired shoes



Bags and belts

NO THANKS



Pillows and duvets

Remember – Items must be clean, dry and in no more than one small, tied carrier bag placed next to your food waste bin.

SMALL ELECTRICALS Collected weekly. Can also be recycled at community recycling centres.

YES PLEASE



Anything with a plug



Anything battery-operated



Chargers and cables



Batteries in a separate bag

NO THANKS



Lightbulbs

Remember – Items must fit into one small, tied carrier bag that is placed next to your food waste bin. Batteries must be put into a separate small bag.

For more information on recycling and waste, including how to sign up to the garden waste collection service, order a compost bin and to use the Surrey Recycles search tool and app to find out what to do with items, visit runnymede.gov.uk/recycling or contact **01932 838383**.

FOOD WASTE Collected weekly from your separate food waste bin.

YES PLEASE



All food



Meat



Eggshells



Teabags

NO THANKS



Liquids

Remember – You can use plastic carrier bags or liners to contain your food waste. No black bags please.

GARDEN WASTE Collected fortnightly from your separate garden waste bin or can be recycled at community recycling centres.

YES PLEASE



Grass cuttings



Prunings



Fallen leaves



Cut flowers

NO THANKS



Soil and stones

Remember – Garden waste collections are suspended for two weeks over Christmas – see runnymede.gov.uk/gardenwaste for details.

CHRISTMAS COLLECTIONS 2026/27

*Christmas/New Year collections may be **earlier or later than usual**. Please check the revised collection days below.*

USUAL REFUSE COLLECTION DAY	REVISED REFUSE COLLECTION DAY
Monday 21 December	Saturday 19 December
Tuesday 22 December	Monday 21 December
Wednesday 23 December	Tuesday 22 December
Thursday 24 December	Wednesday 23 December
Friday 25 December	Thursday 24 December

USUAL RECYCLING COLLECTION DAY	REVISED RECYCLING COLLECTION DAY
Monday 28 December	Tuesday 29 December
Tuesday 29 December	Wednesday 30 December
Wednesday 30 December	Thursday 31 December
Thursday 31 December	Monday 4 January
Friday 1 January	Tuesday 5 January

USUAL REFUSE COLLECTION DAY	REVISED REFUSE COLLECTION DAY
Monday 4 January	Wednesday 6 January
Tuesday 5 January	Thursday 7 January
Wednesday 6 January	Friday 8 January
Thursday 7 January	Saturday 9 January
Friday 8 January	Monday 11 January

USUAL RECYCLING COLLECTION DAY	REVISED RECYCLING COLLECTION DAY
Monday 11 January	Tuesday 12 January
Tuesday 12 January	Wednesday 13 January
Wednesday 13 January	Thursday 14 January
Thursday 14 January	Friday 15 January
Friday 15 January	Saturday 16 January

MISSED COLLECTION?

If your bin hasn't been emptied, please report it at **www.runnymede.gov.uk/requests-reports**/within one working day.

OWN YOUR IMPACT

Visit **surreyep.org.uk** to find out how to own your impact by reducing, reusing and recycling more of your waste.

You can check your bin collection day at:  runnymede.gov.uk/bin-collection-day