

# Newsletter

December 2022

This is the first edition of the Runnymede Borough Council planning newsletter.

This will be sent out periodically to update you on the work being undertaken by the Planning Policy team as we begin the preparations for the new Local Plan.

## Local Plan Review: Latest Position

A report was taken to the 7th September Planning Committee, advising Members that the commencement of the Issues and Options consultation would need to be paused pending the appointment of a new Prime Minister and clarity being provided on proposed changes to national planning policy in the context of the Government's Levelling Up agenda.

The Government announced during the week commencing 5 December that the proposed National Planning Policy Framework prospectus, which will set out proposed changes to support the Government's Levelling Up agenda will be put out for public consultation by Christmas.

The Council will review the consultation material before deciding how best to proceed with Local Plan preparation. It is hoped that it will be possible to take an updated timetable back before the Planning Committee

in the early part of 2023 setting out a revised timetable for the remainder of the Local Plan review and update process.

Whilst the first round of public consultation on the Local Plan has been paused, officers in the Planning Policy team have continued to develop key parts of the evidence base that will underpin the next Local Plan.

The following evidence base documents have recently been published:

**[The Runnymede Retail and Main Town Centre Uses Study](#)**

**[The Sustainable Places Stages 1 and 2 work](#)**

Evidence that we are currently working on, and which we expect to publish in the first quarter of 2023 is listed as follows:

**[The 2022 Strategic Land Availability Assessment \(SLAA\)](#)**

This will replace the 2021 version. The SLAA helps

to identify future sources of land to help meet the area's development needs. It is a technical study which assesses areas of land supply in the Borough to determine how far each is suitable, available and achievable (viable) for development.

If you know of any areas of land that might be able to accommodate five or more net additional homes, or 500 square meters of employment-generating floorspace, you can fill out a form which can be found on the [Council's website](#) and submit it to:

[planningpolicy@runnymede.gov.uk](mailto:planningpolicy@runnymede.gov.uk)

**The 2022 Brownfield Register:**

This register will contain details of all potential sites in the borough considered suitable for housing-led development which are previously developed, whether in urban or Green Belt areas.



continued from page one

## Annual Monitoring Report (2021/22)

This report will confirm progress on the production of documents associated with the Local Plan and the extent to which key objectives of plan policies are being achieved for the 2021/22 financial year.

## Open Space Study

This report will include an assessment of all the publicly accessible open spaces in the Borough, providing a commentary on quantity and quality, as well as making recommendations for future standards of provision.



## Gypsy and Traveller Accommodation Assessment (GTAA)

This report will draw conclusions on the level of need for new pitches and plots for the Borough's travelling community over the next Plan period.

## Have Your Say!

Please check the Latest News section of the [Local Plan Review webpage](#) for updates relating to the publication of key documents and other relevant announcements.

## Implementation of the Runnymede 2030 Local Plan

Alongside work on the Local Plan Review, the Planning Policy team continues to support the implementation of the Runnymede 2030 Local Plan to help ensure that its vision and objectives are delivered before the end of the Plan period.

## Supplementary Planning Documents and other guidance

As part of this work, the Planning Policy team has produced a number of Supplementary Planning Documents (SPDs) which build upon and provide more detailed advice or guidance on policies within the adopted local plan.

Once adopted their content is a material consideration in decision-making on planning applications.

We now have adopted SPDs on:

- Infrastructure Delivery and Prioritisation
- Design
- The Thames Basin Heaths Special Protection Area
- Green and Blue Infrastructure
- Affordable Housing
- Parking

You can view our adopted SPDs on the [Council's website](#).

We are currently producing an Environmental Protection SPD. This will provide further guidance on noise and air quality matters in support of Policy EE2 of the adopted Local Plan.

The Council is also preparing guidance on how to meet the Council's energy requirements in Policy SD8 of the Local Plan.

As a key part of applying the energy hierarchy, the policy requires larger development proposals to incorporate measures to supply a minimum of 10% of the development's energy needs from renewable and/or low carbon technologies.

The guidance will help clarify how applicants can approach this particular requirement and describes the information that should be set out in an Energy Statement to demonstrate compliance with the policy.

A guidance note and calculator is also being produced to clarify how developers should calculate the open space requirements for any residential schemes of 20 dwellings (net) or more homes which come forward in the Borough to comply with policy SL26 of the Local Plan.

## Current and planned consultations



### Open Spaces consultation

Early in the New Year, the Council will be looking to get the views of people living within the Borough or who use our parks and open spaces. We want to know what you use them for, how often you visit them, what about them is important to you, and how they could be improved. We will also be asking the public if they think we have missed any open spaces from our Open Space Study assessment.

### Infrastructure Delivery Schedules Update

Throughout December and January, the Council will be updating its Infrastructure Delivery Schedules. The Schedules draw together and update the infrastructure projects identified in the Infrastructure Delivery Plan (2017) and its Addendum (2018) which identify the infrastructure required to support the delivery of the Runnymede 2030 Local Plan.

The Schedules summarise the infrastructure projects and schemes identified as needed to support planned growth and development across the Borough to 2030, and, where known, include indicative details about their costs, funding sources, delivery timescales and delivery partners.

The IDS is intended to be a 'living' document and is periodically updated over the lifetime of the Local Plan as the nature of infrastructure projects evolves or new information arises, especially those projects identified in the longer term.

We are aiming to update the IDS with new information so that it continues to provide a robust evidence base for the implementation of Policy SD5 of the Local Plan (Infrastructure Provision & Timing); and to help inform the Council's spending decisions as part of its emerging CIL and Section 106 Governance Framework.

Officers will be contacting a range of infrastructure providers and other stakeholders, including local community groups, to identify any new information, with a view to update the Schedules by February 2023.

Full details, including a guidance note, are available on the Planning Policy website at:

[www.runnymede.gov.uk/planning-policy/planning-policy-evidence-based-documents/14](http://www.runnymede.gov.uk/planning-policy/planning-policy-evidence-based-documents/14)

### Englefield Green Conservation Area Appraisal update

The Englefield Green Conservation Area Appraisal is currently being reviewed and updated. Public consultation will follow in the Spring.

### Environmental Protection Supplementary Planning Document

This draft document is likely to be consulted on in Spring 2023.

## Have your say!

Keep an eye out on the Council's communication channels as we will be promoting our various consultations through our traditional and social media platforms, including via the Consultations page of our website at:

[www.runnymede.gov.uk/say/consultations-surveys](http://www.runnymede.gov.uk/say/consultations-surveys)

## Other News

### Youth Council

We are seeking to improve our engagement with sectors of the community that are often under-represented in consultations. One such group is the Borough's youth. To address this, the Council is working with Secondary Schools and Colleges within the Borough to establish a Youth Council, beginning in January 2023.



The purpose of the Youth Council is to give younger people a voice. It allows them to have their say on projects and proposals being undertaken by Runnymede Borough Council and input their views.

If your local Secondary School or College is interested in joining the Runnymede Youth Council, please write to us at [planningpolicy@runnymede.gov.uk](mailto:planningpolicy@runnymede.gov.uk)



## Did you know?

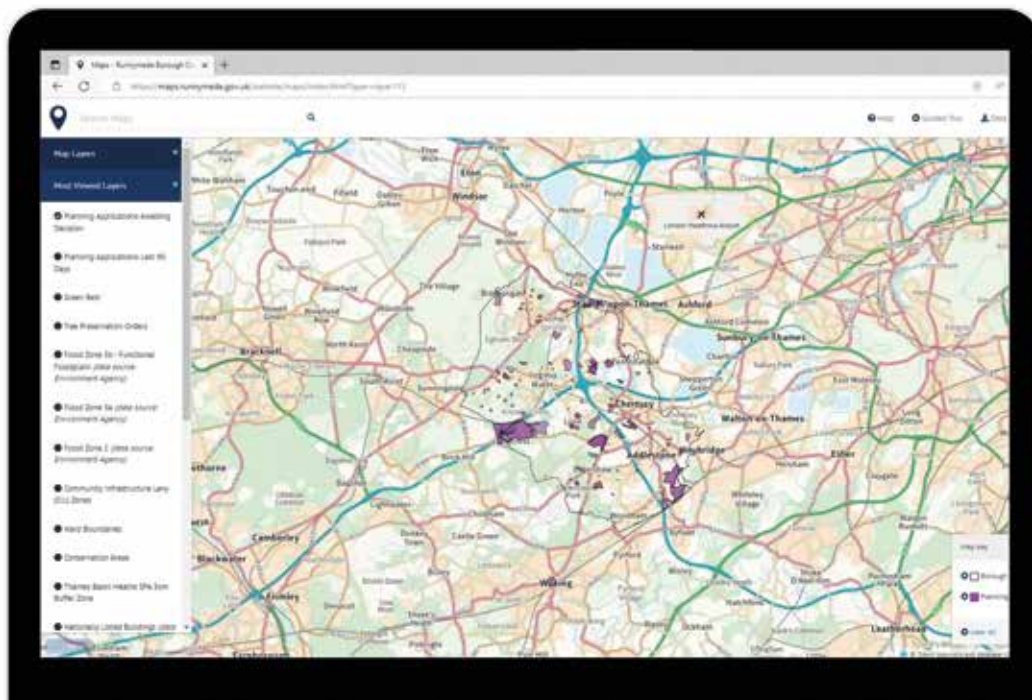
### rMaps:

Runnymede Borough Council has a free to view, publicly accessible mapping service on our website. The maps are customisable allowing you to navigate to a specific address or neighbourhood and allowing you to view more than 100 different map layers including flood zones, Green Belt, schools, medical facilities, car parks, railway stations and listed buildings.

You can also search for the planning history of a given property or area and see all the live planning applications in your area.

### Planning alerts:

The Council has a Planning Alerts system that allows you to receive weekly email notifications about new planning applications that are registered within a specified area of a chosen property. If this is of interest to you, you can sign up using the link below



[www.runnymede.gov.uk/planning-portal](http://www.runnymede.gov.uk/planning-portal) click the Runnymede Maps Box



[www.runnymede.gov.uk/planning-policy/review-runnymede-2030-local-plan](http://www.runnymede.gov.uk/planning-policy/review-runnymede-2030-local-plan)